

# Infographic. Exercise for intermittent claudication

**Tew, G. A., Allen, L., Askew, C. D., Chetter, I., Cucato, G., Doherty, P., Garnham, A., Harwood, A., Ingle, L., Jenkins, M., Michaels, J., Pittack, S., Seenan, C. & Trender, H.**

**Published PDF deposited in Coventry University's Repository**

**Original citation:**

Tew, GA, Allen, L, Askew, CD, Chetter, I, Cucato, G, Doherty, P, Garnham, A, Harwood, A, Ingle, L, Jenkins, M, Michaels, J, Pittack, S, Seenan, C & Trender, H 2020, 'Infographic. Exercise for intermittent claudication' British Journal of Sports Medicine.

<https://dx.doi.org/10.1136/bjsports-2019-101930>

DOI 10.1136/bjsports-2019-101930

ISSN 0306-3674

ESSN 1473-0480

Publisher: BMJ Publishing Group

**Open access** This is an open access article distributed in accordance with the Creative Commons Attribution 4.0 Unported (CC BY 4.0) license, which permits others to copy, redistribute, remix, transform and build upon this work for any purpose, provided the original work is properly cited, a link to the licence is given, and indication of whether changes were made.

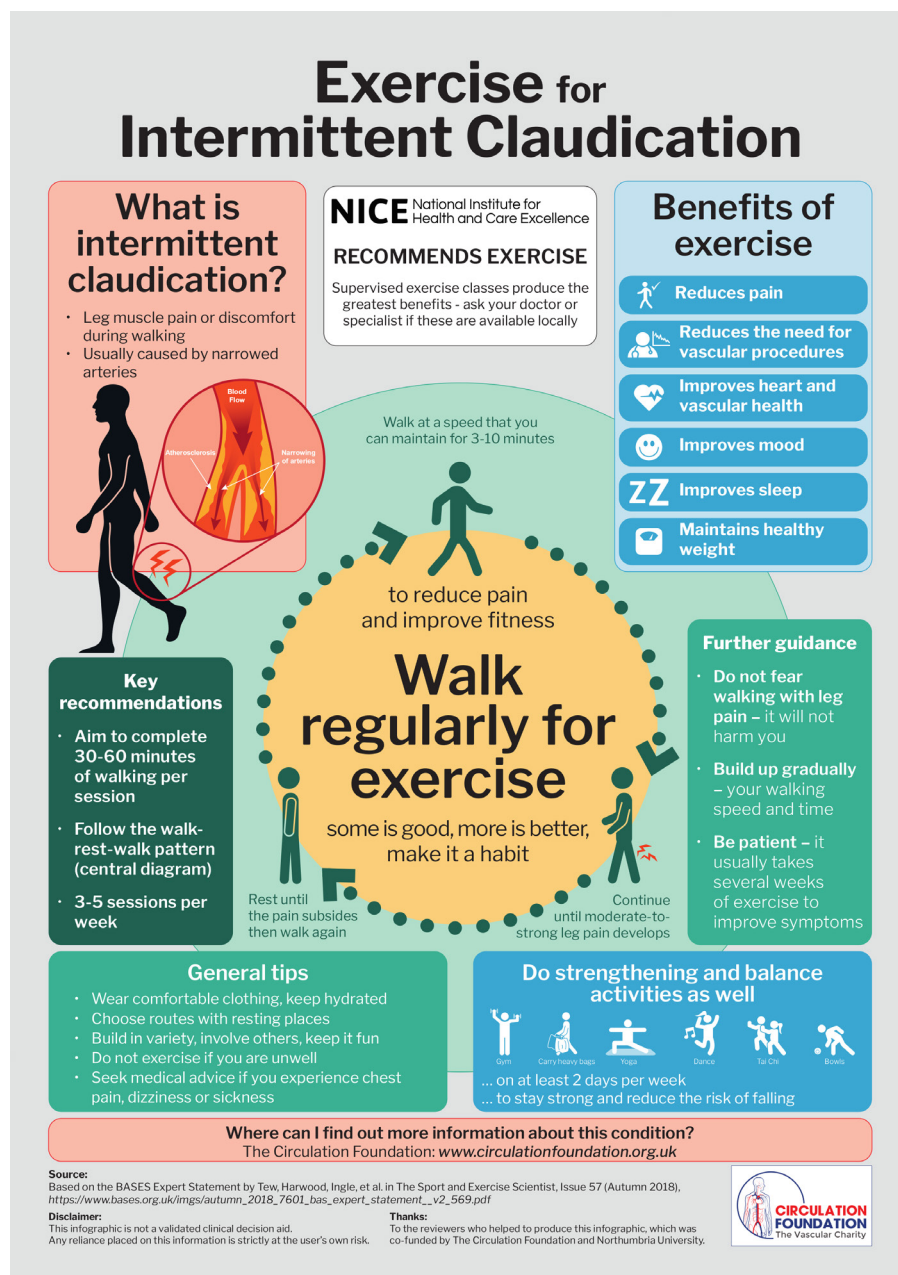
See: <https://creativecommons.org/licenses/by/4.0/>.

© Author(s) (or their employer(s)) 2020. Re-use permitted under CC BY. Published by BMJ.

Copyright © and Moral Rights are retained by the author(s) and/ or other copyright owners. A copy can be downloaded for personal non-commercial research or study, without prior permission or charge. This item cannot be reproduced or quoted extensively from without first obtaining permission in writing from the copyright holder(s). The content must not be changed in any way or sold commercially in any format or medium without the formal permission of the copyright holders.

# Infographic. Exercise for intermittent claudication

Garry A Tew<sup>1,2</sup>, Louise Allen,<sup>3</sup> Christopher D Askew,<sup>4,5</sup> Ian Chetter,<sup>6</sup> Gabriel Cucato,<sup>1</sup> Patrick Doherty,<sup>2</sup> Andrew Garnham,<sup>7</sup> Amy Harwood,<sup>8,9</sup> Lee Ingle,<sup>9</sup> Michael Jenkins,<sup>3</sup> Jonathan Michaels,<sup>10</sup> Sara Pittack,<sup>11</sup> Chris Seenan,<sup>12</sup> Hazel Trender<sup>13</sup>



first-line therapy for IC, and that revascularisation and vasodilator therapy should only be considered if exercise provides insufficient symptom relief. Although research studies have shown unsupervised exercise to be generally less effective at improving functional status than an SEP, it can still be effective, and should be recommended if an SEP is not available.<sup>1,2</sup>

The evidence supporting the efficacy of exercise for people with IC dates back to 1966 when a study reported that 6 months of interval walking exercise improved patients' pain-free and maximum walking distances.<sup>3</sup> Over the following 50+ years, numerous randomised trials and meta-analyses have been published supporting the efficacy of exercise in improving functional status in this population.<sup>4</sup> Despite this evidence and the clinical guideline recommendations, the provision of SEPs is variable, with one study reporting that only 38.5% of vascular units in the UK had access to an SEP.<sup>5</sup> Potential barriers include a lack of funding, facilities and patient motivation.

The benefits of exercise for people with IC are too great to be ignored. Therefore, to support the provision and uptake of exercise, we have developed two new resources. First, a statement for healthcare professionals that summarises the evidence and provides exercise prescription guidelines.<sup>2</sup> Second, an infographic of key messages aimed primarily at patients. This infographic, which may be shared digitally or used as a poster or handout in clinics, aims to encourage patients to make exercising a regular habit by highlighting potential benefits and providing clear guidelines and safety messages. We hope that readers will share this infographic widely to enhance awareness of this debilitating condition and the important role that exercise can play in its management.

<sup>1</sup>Department of Sport, Exercise and Rehabilitation, Northumbria University, Newcastle, UK

<sup>2</sup>Department of Health Sciences, University of York, England, York, UK

<sup>3</sup>Imperial College Healthcare NHS Trust, London, UK

<sup>4</sup>School of Health and Sport Sciences, University of the Sunshine Coast, Maroochydore DC, Queensland, Australia

<sup>5</sup>Sunshine Coast Health Institute, Sunshine Coast University Hospital, Sunshine Coast, Queensland, Australia

<sup>6</sup>Hull York Medical School, Hull, UK

<sup>7</sup>Royal Wolverhampton Hospitals NHS Trust, Wolverhampton, UK

Intermittent claudication (IC) is pain or discomfort in the muscles of the calf, thigh or buttock that occurs during walking and is relieved by rest. It affects 4% of people over 60 years of age and is the most common symptom of peripheral arterial disease (PAD). For people with IC, the goals of treatment are twofold: (1) secondary prevention of cardiovascular disease through management of risk factors

(eg, tobacco use, dyslipidaemia, diabetes, hypertension and physical inactivity); (2) improving functional status, with treatment options including exercise training, revascularisation and vasodilator therapy.<sup>1</sup>

In 2012, the UK's National Institute for Health and Care Excellence published a clinical guideline on the diagnosis and management of PAD.<sup>1</sup> This guideline recommended that a 3-month supervised exercise programme (SEP) should be offered as a

<sup>8</sup>Thermal Ergonomics Laboratory, Discipline of Exercise and Sport Science, The University of Sydney, Sydney, New South Wales, Australia

<sup>9</sup>Department of Sport, Health & Exercise Science, University of Hull, Hull, UK

<sup>10</sup>School of Health and Related Research, The University of Sheffield, Sheffield, UK

<sup>11</sup>Your Thinking Ltd, London, UK

<sup>12</sup>Department of Physiotherapy and Paramedicine, Glasgow Caledonian University, Glasgow, UK

<sup>13</sup>Sheffield Teaching Hospitals NHS Foundation Trust, Sheffield, UK

**Correspondence to** Dr Garry A Tew, Department of Sport, Exercise and Rehabilitation, Northumbria University, Newcastle NE1 8ST, UK; [garry.tew@northumbria.ac.uk](mailto:garry.tew@northumbria.ac.uk)

**Correction notice** This article has been corrected since it published Online First. The title has been corrected.

**Twitter** Garry A Tew @garry\_tew and Chris Seenan @chrisseenan

**Contributors** GT led the design of the infographic and drafted the accompanying text. All coauthors contributed to the design of the infographic and reviewing and revising the text. All authors approved the final version to be published and are accountable for all aspects of the work.

**Funding** The infographic was funded by The Circulation Foundation and Northumbria University.

**Competing interests** None declared.

**Patient consent for publication** Not required.

**Provenance and peer review** Not commissioned; externally peer reviewed.



## OPEN ACCESS

**Open access** This is an open access article distributed in accordance with the Creative Commons Attribution 4.0 Unported (CC BY 4.0) license, which permits others to copy, redistribute, remix, transform and build upon this work for any purpose, provided the original work is properly cited, a link to the licence is given, and indication of whether changes were made. See: <https://creativecommons.org/licenses/by/4.0/>.

© Author(s) (or their employer(s)) 2020. Re-use permitted under CC BY. Published by BMJ.



Check for updates

**To cite** Tew GA, Allen L, Askew CD, *et al*. *Br J Sports Med* Epub ahead of print: [please include Day Month Year]. doi:10.1136/bjsports-2019-101930

Accepted 23 January 2020

*Br J Sports Med* 2020;0:1–2.  
doi:10.1136/bjsports-2019-101930

## ORCID iD

Garry A Tew <http://orcid.org/0000-0002-8610-0613>

## REFERENCES

- 1 National Institute for Health and Care Excellence. Peripheral arterial disease: diagnosis and management (clinical guideline CG147), 2012. Available: [www.nice.org.uk/guidance/cg147](http://www.nice.org.uk/guidance/cg147)
- 2 Tew GA, Harwood A, Ingle L, *et al*. The BASES Expert Statement on exercise training for people with intermittent claudication due to peripheral arterial disease. The Sport and Exercise Scientist, 2018. Available: [https://www.bases.org.uk/imgs/autumn\\_2018\\_7601\\_bas\\_expert\\_statement\\_\\_v2\\_569.pdf](https://www.bases.org.uk/imgs/autumn_2018_7601_bas_expert_statement__v2_569.pdf)
- 3 Larsen OA, Lassen NA. Effect of daily muscular exercise in patients with intermittent claudication. *Lancet* 1966;2:1093–5.
- 4 Lane R, Harwood A, Watson L, *et al*. Exercise for intermittent claudication. *Cochrane Database Syst Rev* 2017;12:CD000990.
- 5 Harwood AE, Smith GE, Broadbent E, *et al*. Access to supervised exercise services for peripheral vascular disease patients. *The Bulletin of the Royal College of Surgeons of England* 2017;99:207–11.