

# Wood-glass-epoxy composites

Claisse, P.A.

**Presented version deposited in CURVE May 2013**

**Original citation & hyperlink:**

Claisse, P.A. (2012, April). *Wood-glass-epoxy composites*. Paper presented at the bamboo structures conference, National University of Colombia, Bogota.

**Copyright © and Moral Rights are retained by the author(s) and/ or other copyright owners. A copy can be downloaded for personal non-commercial research or study, without prior permission or charge. This item cannot be reproduced or quoted extensively from without first obtaining permission in writing from the copyright holder(s). The content must not be changed in any way or sold commercially in any format or medium without the formal permission of the copyright holders.**

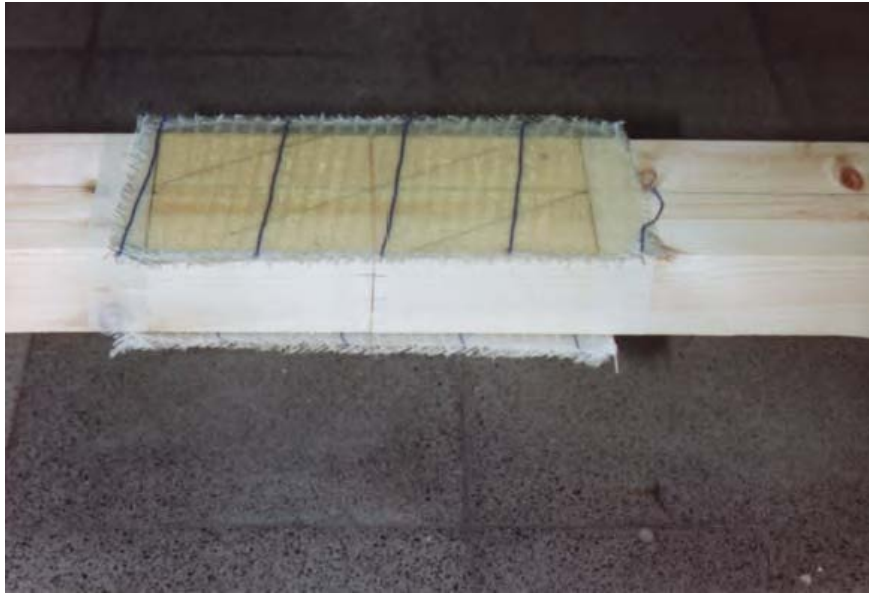
**CURVE is the Institutional Repository for Coventry University**

<http://curve.coventry.ac.uk/open>

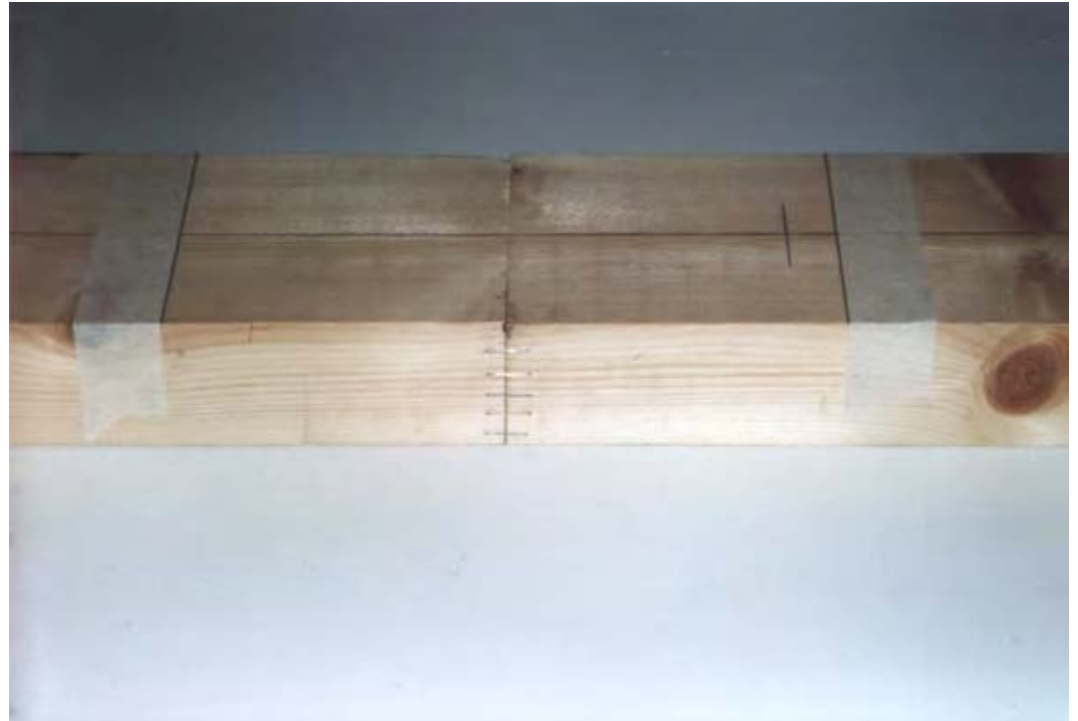
# Wood-Glass-Epoxy Composites Research at Coventry

Peter Claisse

# Assembling a timber joint with glass-epoxy



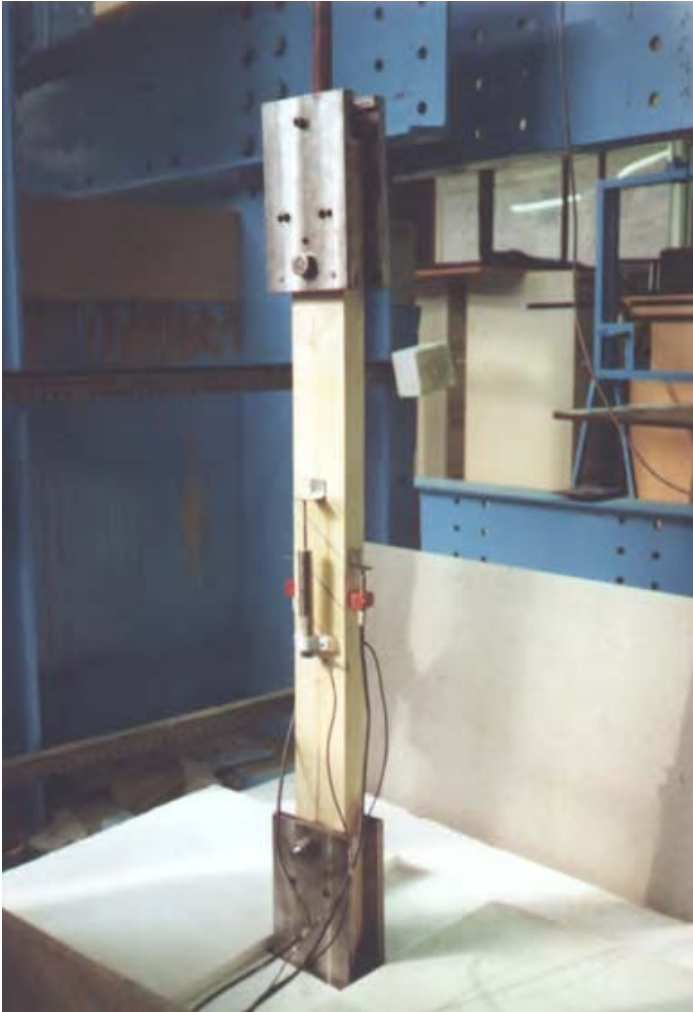
# Examples of joints



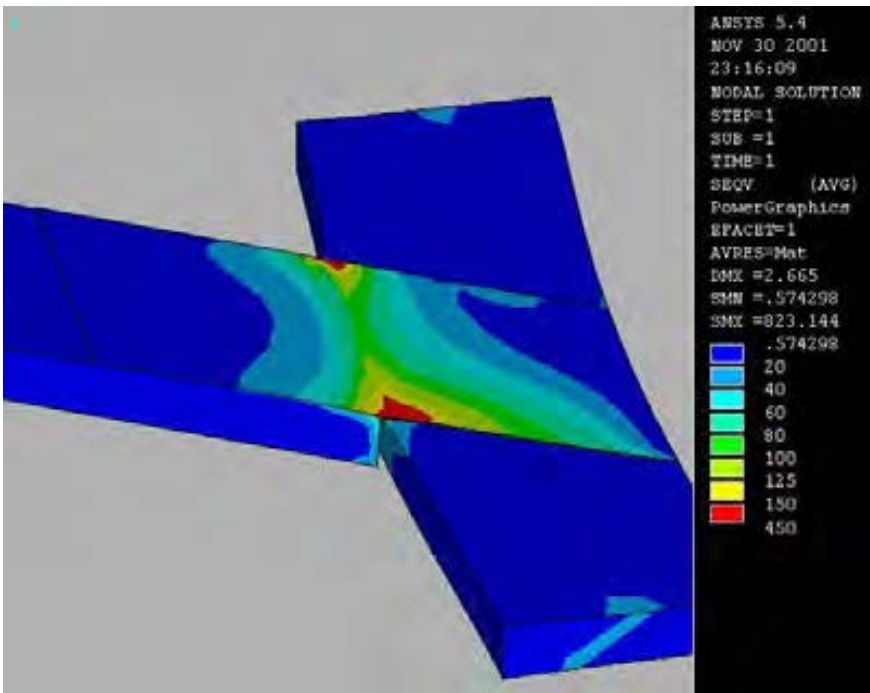
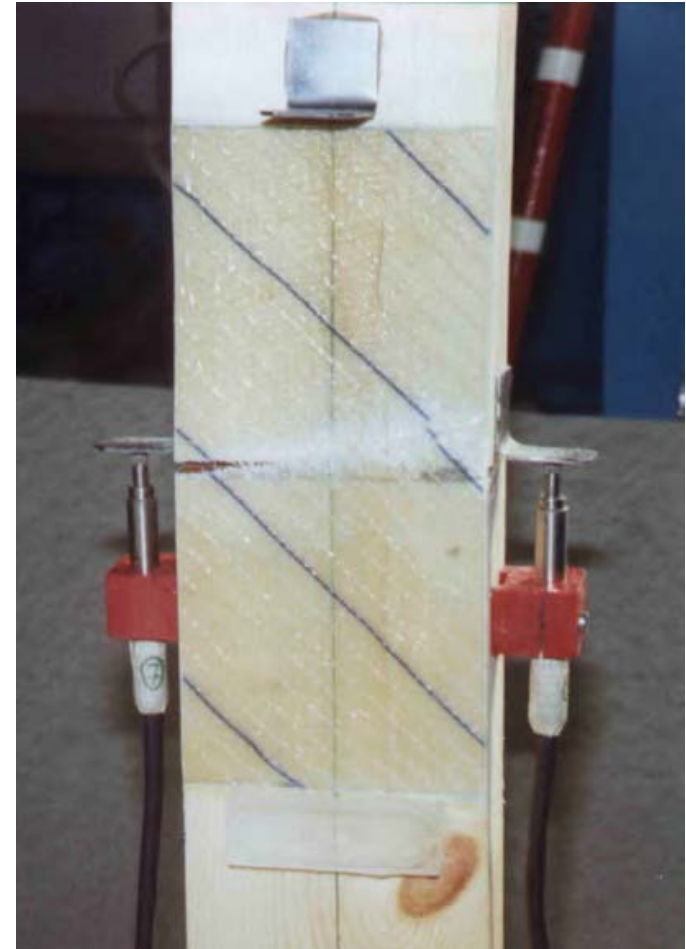
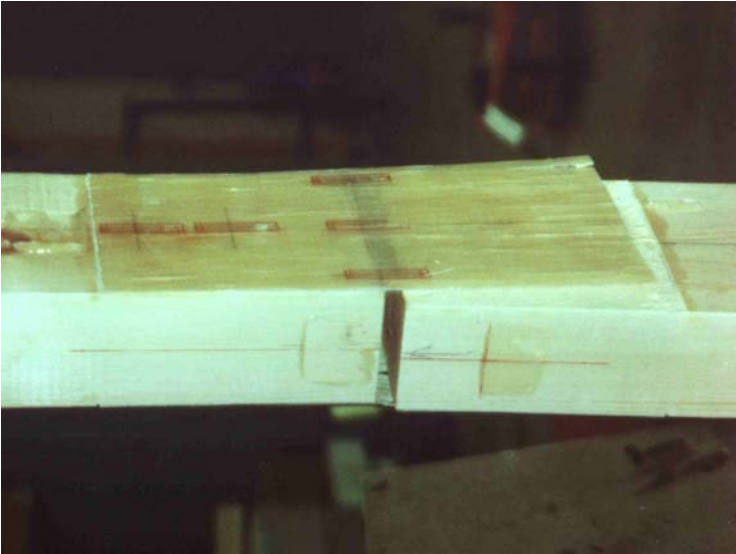
# Setting strain gauges in the resin



# Testing



# Modes of failure

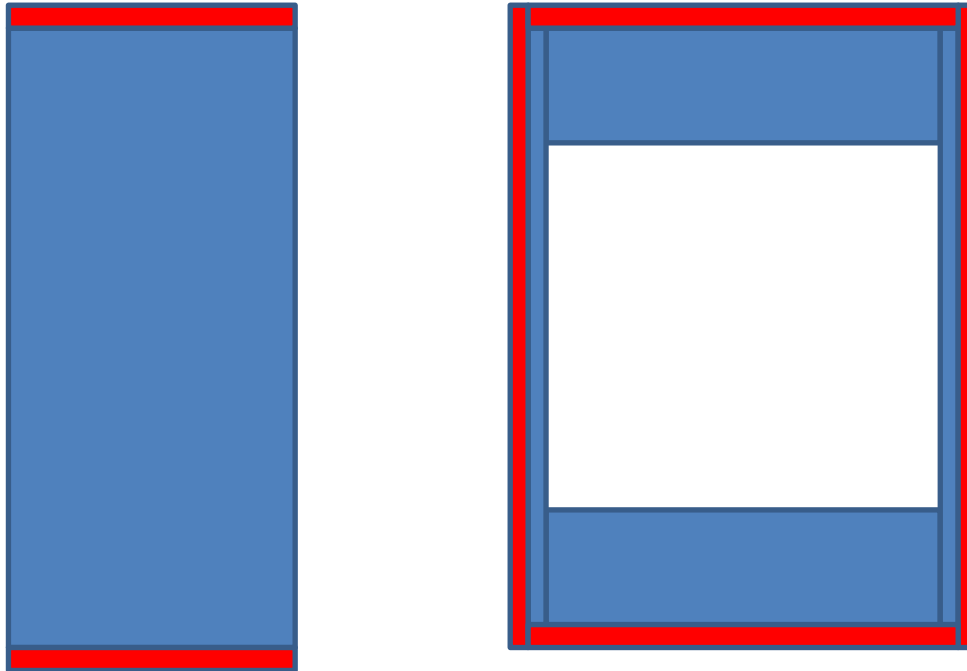


# Testing a complete truss

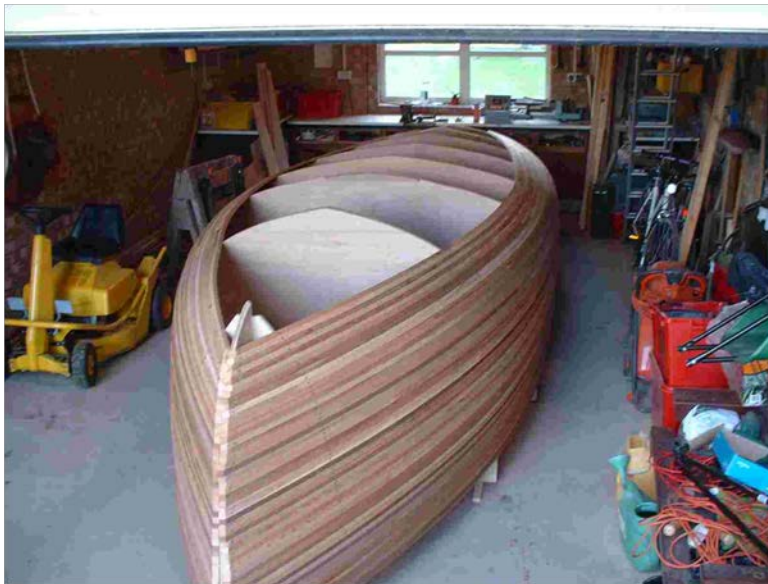
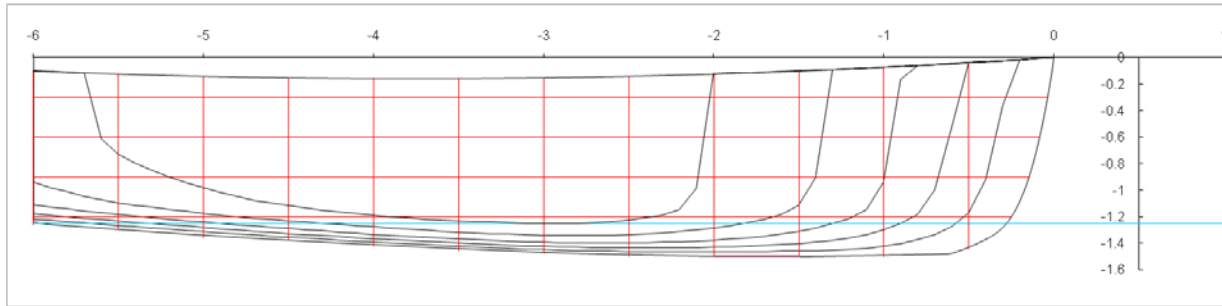




# Reinforcing timber and composite beams



# Strip-plank boat construction using glass and aramid fibres.

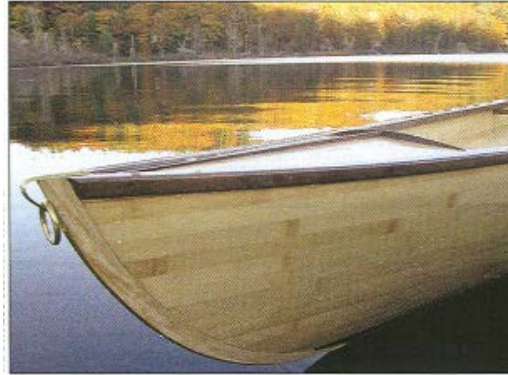


# Advantages and disadvantages

- The advantages of wood-glass epoxy composites are:
  - Improved joint efficiency can give reduced member sizes
  - Surface is impermeable to water and durable
- The disadvantages are
  - Cost (can be reduced by using polyesters)
  - Difficulties with application including health risks.

Applications of glass-epoxy to bamboo??

Strip planking ??



Joining circular sections?

Thank you for your attention  
For more details  
(and a full copy of the PhD thesis)  
Please see [www.claisse.info](http://www.claisse.info)